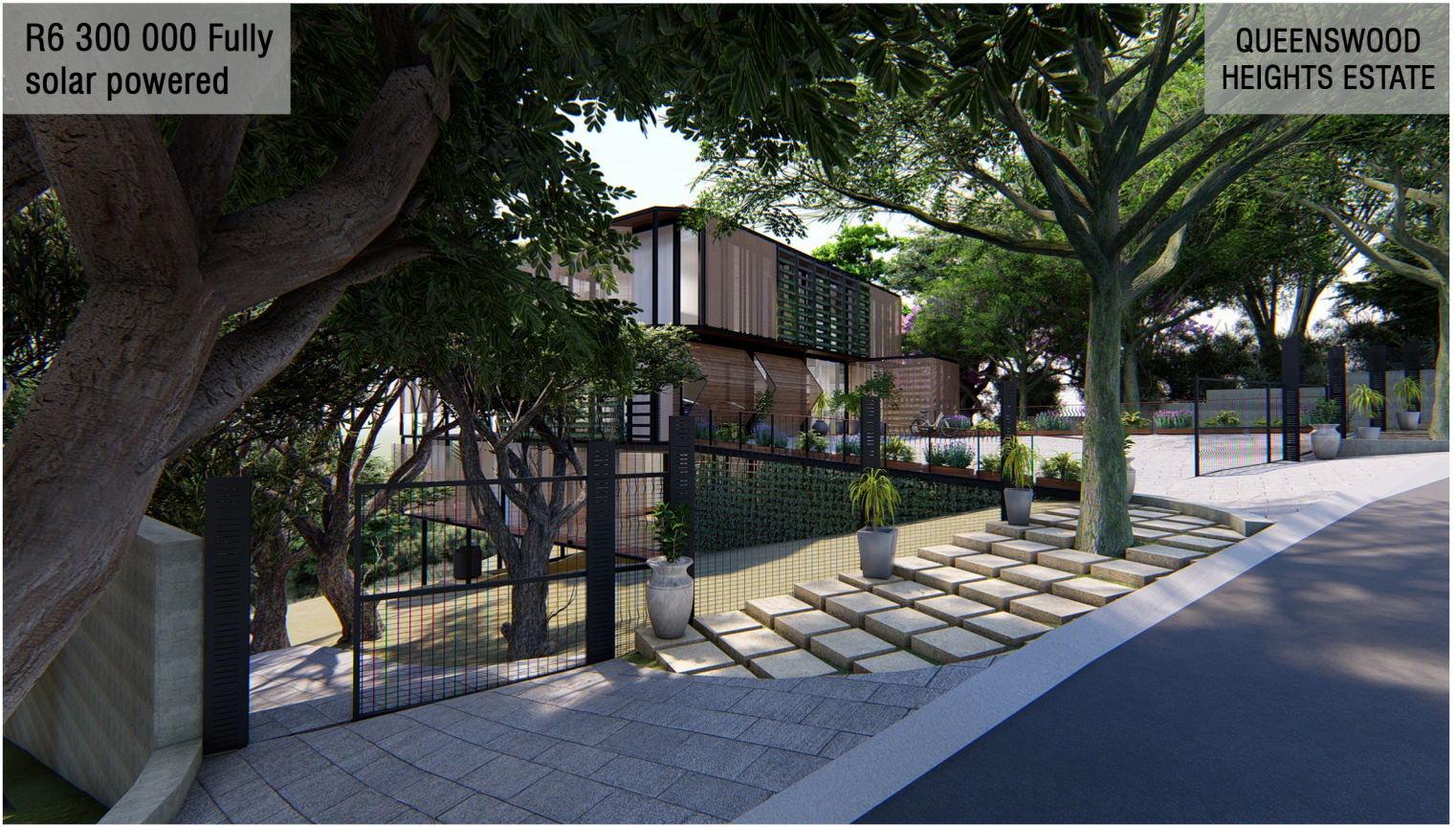


R6 300 000 Fully solar powered

QUEENSWOOD HEIGHTS ESTATE



## QUEENSWOOD HEIGHTS ESTATE

QUEENSWOOD IS A SEDATE SUBURB WHICH IS IN CLOSE PROXIMITY TO PRETORIA CENTRE AND EASILY ACCESSIBLY TO MAJOR ROUTES. QUEENSWOOD IS SITUATED OVER THE PICTURESQUE VIEWS OF THE COLBYN VALLEY NATURE AREA.



5

bedrooms



4.5

bathrooms



2

garages



location

QUEENSWOOD



375m<sup>2</sup>

area



off-grid

Solar powered

HOUSE  
ZERO  
IN STYLE | OFF GRID



R6 300 000 Fully solar powered

QUEENSWOOD HEIGHTS ESTATE



## LIVING ROOM

<b>INTERIOR &amp; EXTERIOR WALLS</b> HOUSEZERO WALL SYSTEM
<b>DOORS &amp; WINDOW FRAMES</b> HOUSEZERO FENESTRATION SYSTEM
<b>ROOF &amp; CEILING</b> HOUSEZERO ROOF SYSTEM
<b>CORNICES &amp; SKIRTINGS</b> HOUSEZERO SYSTEM
<b>STAIRCASE</b> HOUSEZERO MILD STEEL STAIRCASE WITH ENGINEERED WOOD TREADS
<b>BLINDS</b> HOUSEZERO SYSTEM
<b>FIREPLACE</b> HOUSEZERO BLACK MILD STEEL
<b>WATER HEATING</b> SOLAR HEATING SYSTEM WITH A GAS BACKUP
<b>GREYWATER RECYCLING SYSTEM INCLUDING HYDROPONICS</b> HOUSEZERO
<b>SOLAR POWER</b> HOUSE ZERO SOLAR ELECTRICITY SYSTEM

Modern design & attractive features

All components in line with latest energy efficiency technologies and standards.

100% energy grid independence, roof is an active power station, generating all the energy required for electricity and heating needs.



5

bedrooms



4.5

bathrooms



2

garages



location

QUEENSWOOD



375m<sup>2</sup>

area



off-grid

Solar powered

**HOUSE ZERO**  
IN STYLE | OFF GRID



R6 300 000 Fully solar powered

QUEENSWOOD HEIGHTS ESTATE



## KITCHEN

<b>COUNTER TOPS</b> COLOURED GLASS
<b>CUPBOARD DOORS</b> COLOURED GLASS
<b>BACK OF CARCASS AGAINST HOUSE</b> POLISHED STAINLESS STEEL (GLASS TO BE PAINTED)
<b>CARCASS OF KITCHEN</b> POLISHED STAINLESS STEEL
<b>SHELVES</b> POLISHED STAINLESS STEEL
<b>DOUBLE SINK</b> HOUSEZERO STAINLESS STEEL SINK
<b>PREP BOWL</b> HOUSEZERO STAINLESS STEEL SINK
<b>KITCHEN MIXERS</b> STAINLESS STEEL MODERN MIXER

Modular construction yet contemporary in style.

Incorporating large open spaces, wide open facades, smart combination of wood and glass surfaces, latest style bathrooms and kitchens, carried by custom engineered steel structure and hi tech floor, wall and roof paneling.



QUEENSWOOD



HOUSE ZERO  
IN STYLE | OFF GRID



R6 300 000 Fully solar powered

QUEENSWOOD HEIGHTS ESTATE



## BATHROOM

<b>WALLS</b> GLASS PAINTED
<b>SHOWER TRAY</b> STAINLESS STEEL BASE SHOWER TRAY, CUSTOM HOUSE ZERO DESIGNED, TEAK FINISHED OR MOSAICS
<b>BATH</b> MODERN FREESTANDING BATH
<b>CISTERN / TOILET</b> BACK TO WALL PAN
<b>BATH MIXER</b> WALL MOUNTED MIXER
<b>SHOWER MIXER</b> CONCEALED SHOWER MIXER
<b>SHOWER ARM</b> SQUARE SHOWER ARM
<b>BASIN</b> SURFACE MOUNTED MODERN SQUARED EDGES BASIN
<b>BASIN MIXER</b> STAINLESS STEEL MODERN SQUARE MIXER
<b>BASIN VANITY</b> GLASS VANITY
<b>SHOWER ROSE</b> SQUARE SHOWER HEAD
<b>MIRROR</b> CUSTOM HOUSE ZERO FRAMELESS MIRROR

HouseZero's roofing system is not only a roof, it is a solar power station, which supplies all energy requirements without any need for grid connection.

We also supply a solar geyser with gas back-up supply for your home.

A gas hob & oven accompany the design.



5

bedrooms



4.5

bathrooms



2

garages



location

QUEENSWOOD



375m<sup>2</sup>

area

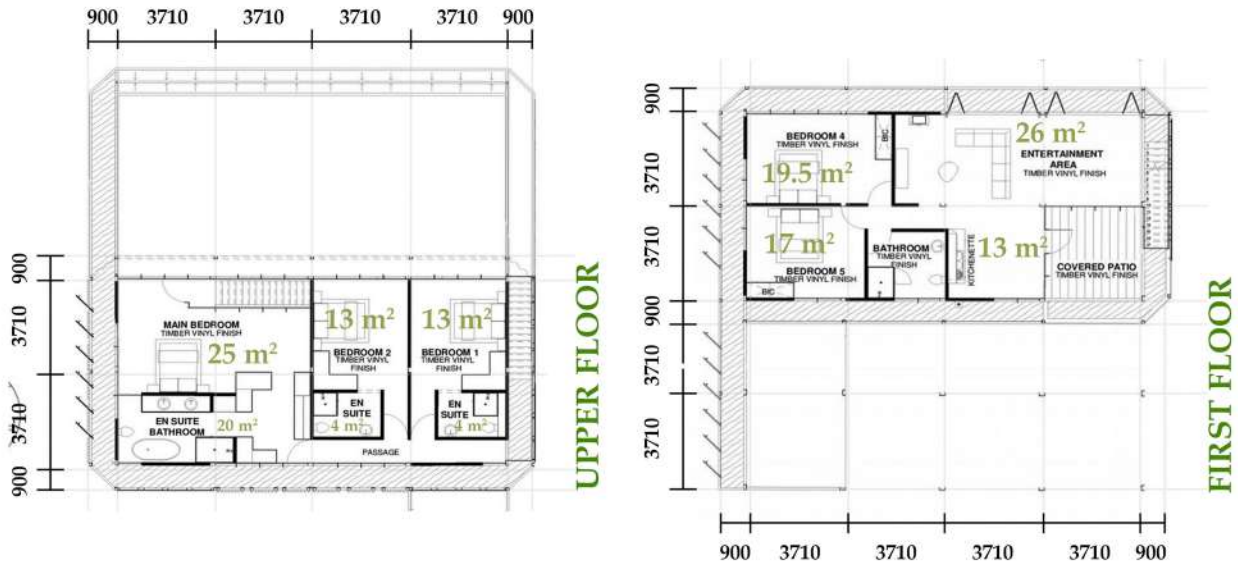


off-grid

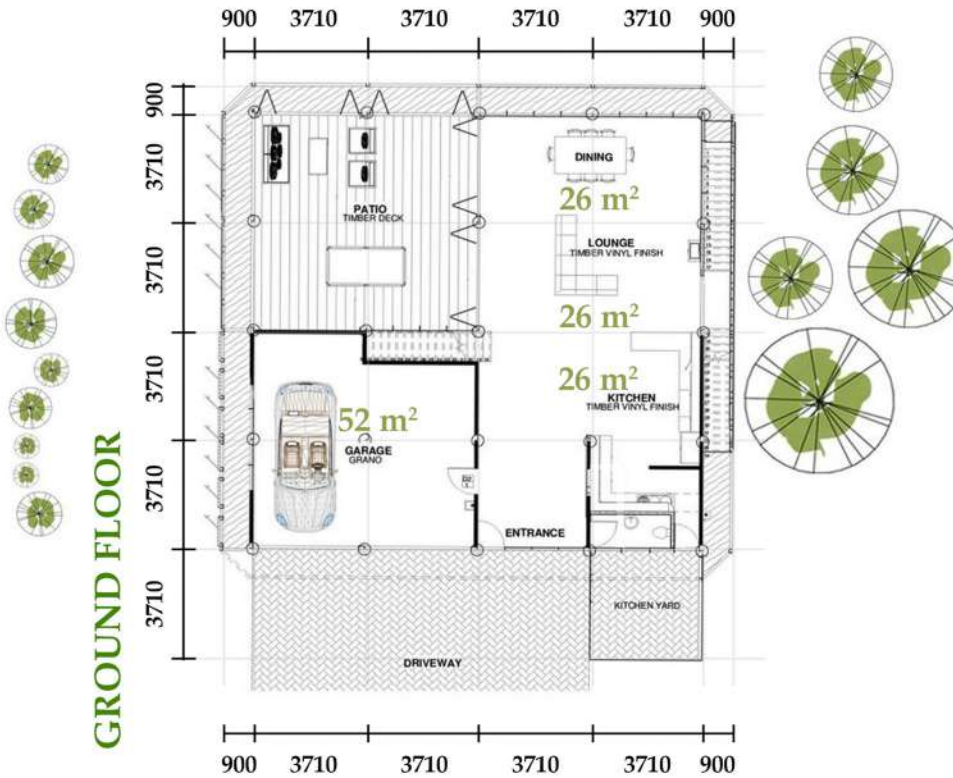
Solar powered

HOUSE ZERO  
IN STYLE | OFF GRID





**UPPER & FIRST FLOOR PLAN**  
NTS.



**GROUND FLOOR PLAN**  
NTS.

5	4.5	2	QUEENSWOOD	375m <sup>2</sup>	Solar powered
bedrooms	bathrooms	garages	location	area	off-grid

**HOUSE ZERO**  
IN STYLE | OFF GRID



R6 300 000 Fully solar powered

QUEENSWOOD HEIGHTS ESTATE



 5 bedrooms

 4.5 bathrooms

 2 garages

 location

QUEENSWOOD

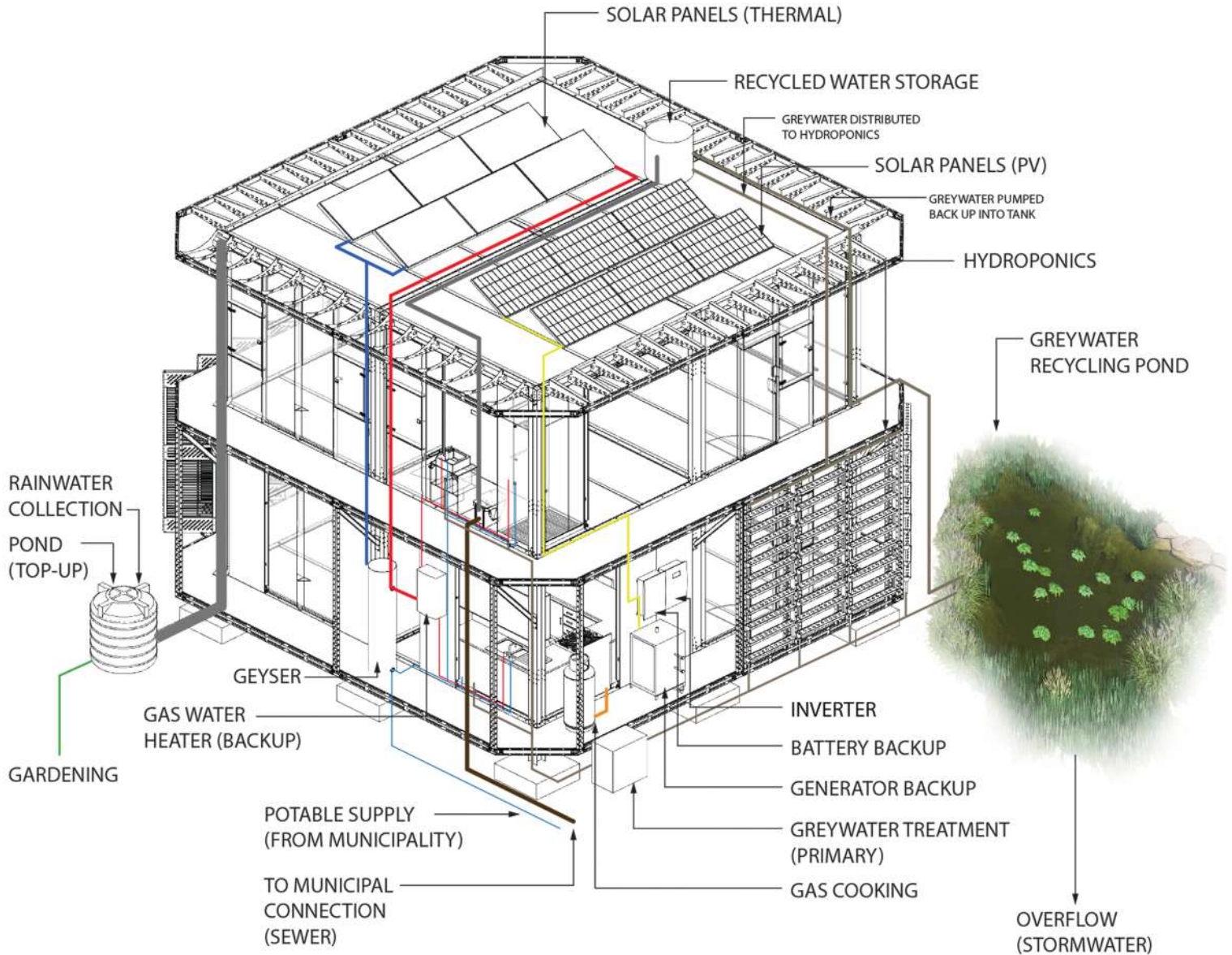
 375m<sup>2</sup> area

 off-grid

Solar powered

HOUSE ZERO  
IN STYLE | OFF GRID





5

bedrooms



4.5

bathrooms



2

garages



location

QUEENSWOOD



area

375m<sup>2</sup>



Solar powered

off-grid